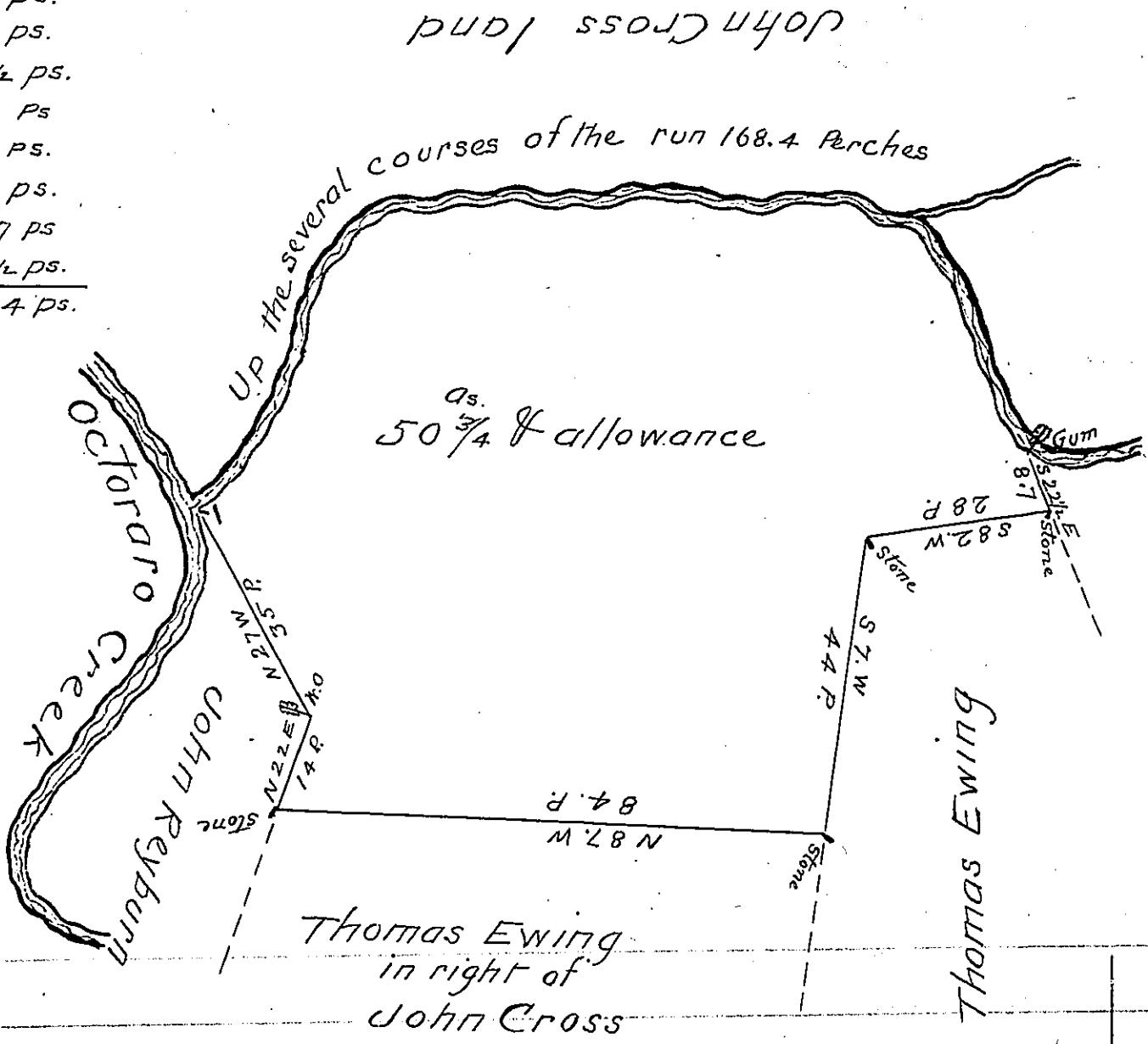


Courses up the run
 N 32 E 26. ps.
 N 24 1/2 E. 18. ps.
 N 76. E 24 1/2 ps.
 S 80. E. 8.7 ps
 S 89. E 23. ps.
 N 84 1/2 E 20. ps.
 S 58 1/2 E. 13.7 ps
 S 29 1/2 E 34 1/2 ps.
 168.4 ps.



The above Draught represents a tract of Land situate in Lower Oxford Township Chester County containing $50\frac{3}{4}\%$ allowance of six per cent $\&c$. Being a part of a Tract of $188\frac{1}{4}\%$ allowance which was Surveyed to John Cross on his warrant dated the 7th day of August 1738 Surveyed January 22nd 1814

P^r Arthur Andrews jr

D.S.

Jacob Spangler Esq^r }
 Surveyor General }

IN TESTIMONY that the above is a copy of the original remaining on file in the Department of Internal Affairs of Pennsylvania, made conformably to an Act of Assembly approved the 16th day of February, 1833, I have hereunto set my Hand and caused the Seal of said Department to be affixed at Harrisburg, this sixteenth day of May 1904.

James D. Brown
 Secretary of Internal Affairs.